



# MONTHLY MEMBERSHIP PROGRESS REPORT

District 2 S1

Results as of: 04/30/2019

GMT: GREGORY GILLIAM

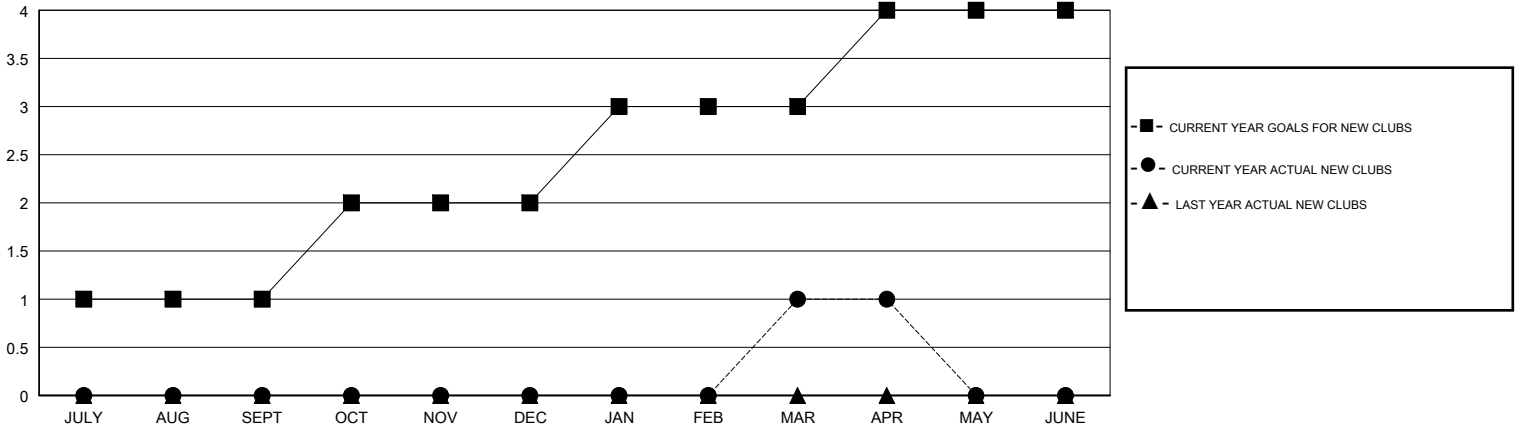
LOCATION TEXAS

GMT CA

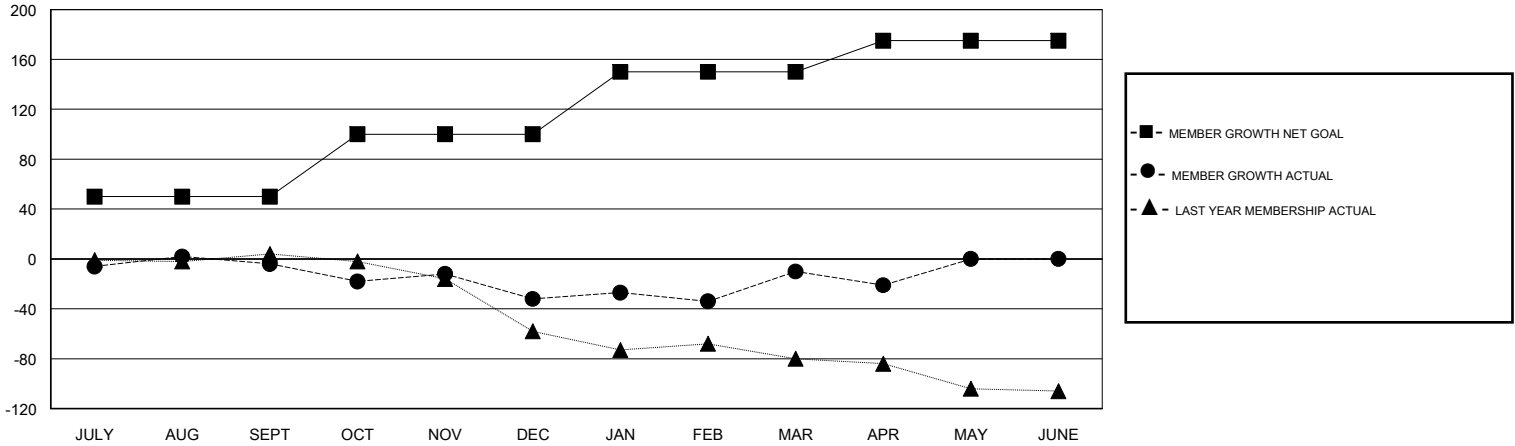
Clubs			
RESULTS FOR 2018-2019			
QUARTER	NEW CLUB GOAL	NEW CLUBS	DROPPED CLUBS
JULY/AUG/SEPT	1	0	2
OCT/NOV/DEC	1	0	1
JAN/FEB/MAR	1	1	0
APR/MAY/JUNE	1	0	0

Members			
RESULTS FOR 2018-2019			
QUARTER	MEMBER GROWTH NET GOAL	MEMBER GROWTH ACTUAL	DROPPED MEMBERS ACTUAL (including transfers)
JULY/AUG/SEPT	50	55	56
OCT/NOV/DEC	50	40	63
JAN/FEB/MAR	50	69	44
APR/MAY/JUNE	25	30	40

GOALS AND ACTUAL NEW CLUBS CUMULATIVE



GOALS AND ACTUAL MEMBERS CUMULATIVE



DROPPED CLUBS: 3
------------------

36 CLUBS OF 50 ADDED 1 OR MORE NEW MEMBERS

GENDER DISTRIBUTION	
MALE	1,204 (74.32%)
FEMALE	416 (25.68%)
Women Percentage Fiscal Year Goal: 29%	

DROPPED MEMBERS	
DECEASED	18
CLUB CANCELLED	18
OTHER	167
<b>TOTAL</b>	<b>203</b>

[CLICK HERE FOR CUMULATIVE MEMBERSHIP DATA](#)

TOTAL FAMILY UNIT MEMBERS	196
FAMILY MEMBERS PAYING HALF DUES	100